

# Voice!

Suze Pratten

♩ = 80

C F/C C

Gm/Bb Gm<sup>6</sup>/Bb



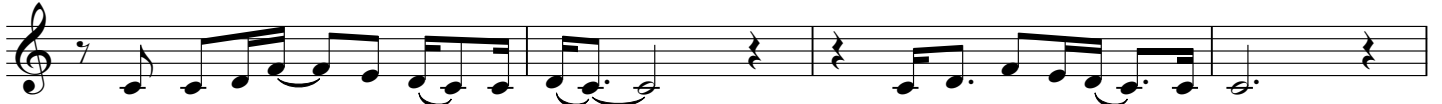
You made a State-ment From the Heart.

you made it loud you made it clear.

5 Gm/Bb

F/A F/C Fm/A<sup>b</sup>

C F/C



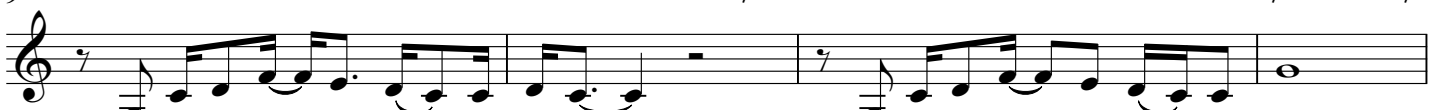
You made a State-ment From the heart.

Now it's up to me. to hear

9 C

C F/C C

Gm/Bb Gm<sup>6</sup>/Bb



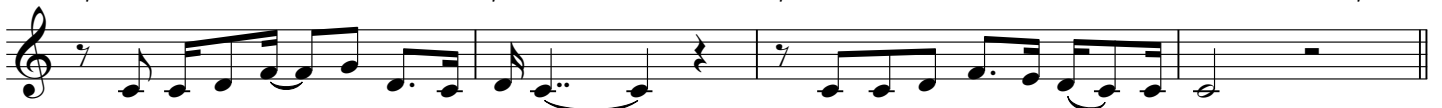
So ma-ny nat-ions ca-me to-geth-er.

so ma-ny peo - ple fou-nd one voice

13 Gm/Bb

F/A Fm/A<sup>b</sup>

C F/C



It was-n't eas - y but you did it  
*mf*

and now we need to ma-ke the choice

## Chorus

17 C

Bb F/A

C C/E



*f* It's a choice for Voice! Voice Treat - y Truth. wo ho ho

20 Bb

F/A C

C/E



Voice! Voice Treat - y Truth. wo ho ho

22 Bb

F/A C F/C C



Voice! Voice Treat - y Truth. woah.

24 Ab

Bb C F/C C



Voice, *mf* Treat - y Truth. yeah.

26  $A\flat$   $B\flat$  C  $F/C$

Voice, Treat - y Truth\_\_\_\_\_

28 C C  $F/C$  C  $G\flat/B\flat$   $G\flat^6/B\flat$

it's way past time for re-cog-ni-tion\_\_\_\_\_ This voice to par - lia-ment en - shrined\_\_\_\_\_

32  $G\flat/B\flat$   $F/A$   $F\flat/A\flat$  C  $F/C$

our nat-ion needs the truth be told\_\_\_\_\_ let truth be told and there's treat-ies to\_ be\_\_signed

*f*

*Chorus*  
36 C  $B\flat$   $F/A$  C  $C/E$

*f* It's a choice for Voice! Voice Treat - y Truth\_\_\_\_\_ wo ho ho

39  $B\flat$   $F/A$  C  $C/E$

Voice! Voice Treat - y Truth\_\_\_\_\_ wo ho ho

41  $B\flat$   $F/A$  C  $F/C$  C

Voice! Voice Treat - y Truth\_\_\_\_\_ woah\_\_\_\_\_

43  $A\flat$   $B\flat$  C  $F/CC$   $A\flat$   $B\flat$

Voice, *mf* Treat - y Truth\_\_\_\_\_ yeah\_\_\_\_\_ Voice, *f* Treat - y Truth

46 C  $A\flat$   $B\flat$  C C

Voice, *ff* Treat - y Truth\_\_\_\_\_